

Client:	Simple Peptide
Accession #:	2605220314
Search Code:	Simp2605220314
Received:	05/22/2026
Reported:	05/24/2026
Lot:	SLU1C-052026-7

Sample Summary

Product:	SLU-PP-332 1000mcg	Purity:	99.65%
Identity:	Confirmed	Net Content:	1.11 mg
Appearance:	White Capsules		

Analytical Results

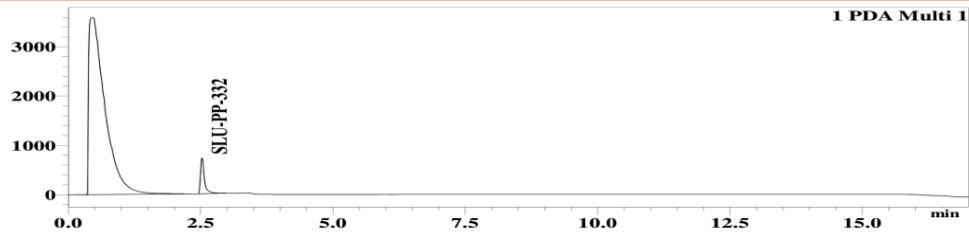
Test	Result
Identity (LC-MS)	SLU-PP-332
Purity (HPLC-UV)	99.65%
Net Content	1.11 mg

Method: Endotoxin testing performed using Limulus Amebocyte Lysate assay in accordance with USP <85> under validated laboratory conditions.

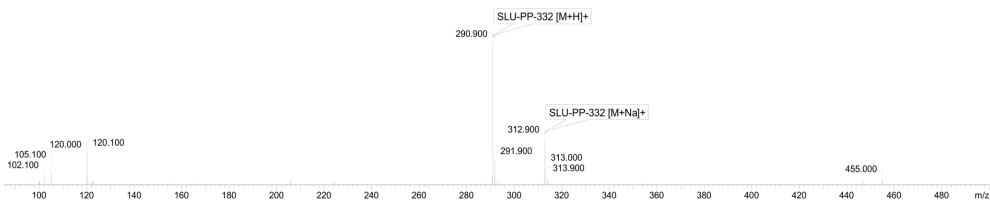
Endotoxin Replicate 1:	Pass	Assay Sensitivity: ≤0.05 EU/mL
Endotoxin Replicate 2:	Pass	Assay Sensitivity: ≤0.05 EU/mL

Method: HPLC with UV detection coupled with mass spectrometry (LC-MS).

Chromatogram



Mass Confirmation




Principal Chemist

FreedomDiagnosticsTesting.com
Admin@FreedomDiagnostics.net
Proudly Owned and Operated in the USA



The peptide purity analysis reported here was conducted using LCMS/MS under standard laboratory conditions. This analysis is intended for informational purposes only and is specific to the sample (s) provided. The peptides tested are intended for research use only and are not approved for human or veterinary use, diagnostic, therapeutic, or clinical applications. Results should be interpreted by qualified professionals within the scope of the intended research. The accuracy and reliability of the test may be influenced by sample integrity, handling, and other experimental variables.